

ProMasTech

PMT MULTIPLACER 1500



ProMasTech Lda (Portugal)

Manutenção, Automação e Tecnologia Industrial
Rua dos Tractores N°506, Edifício C & S
Telf. +351 382 866/67
2870-607 Alto Estanqueiro - Portugal

ProMasTech (Brasil)

Edifício Vieira Alves Business Center
Rua Salvador nº120, 12ºAndar, Sala 1202
Tel: +55 92 3878-2653
CEP:69.057-040 Manaus - Brasil

WWW.PROMASTECH.PT

ProMasTech

What Components can be placed?



- Axial
- Radial
- Connectors
- Sockets
- DIPs
- Relays
- Transformers
- Displays
- Etc.....



ProMasTech Lda (Portugal)

Manutenção, Automação e Tecnologia Industrial
Rua dos Tractores N°506, Edificio C & S
Telf. +351 382 866/67
2870-607 Alto Estanqueiro - Portugal

ProMasTech (Brasil)

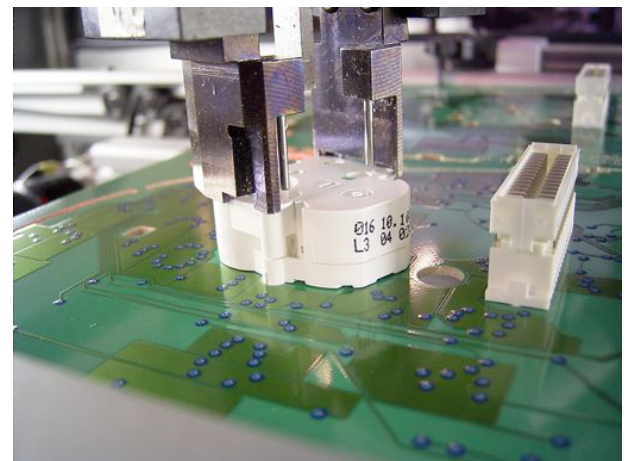
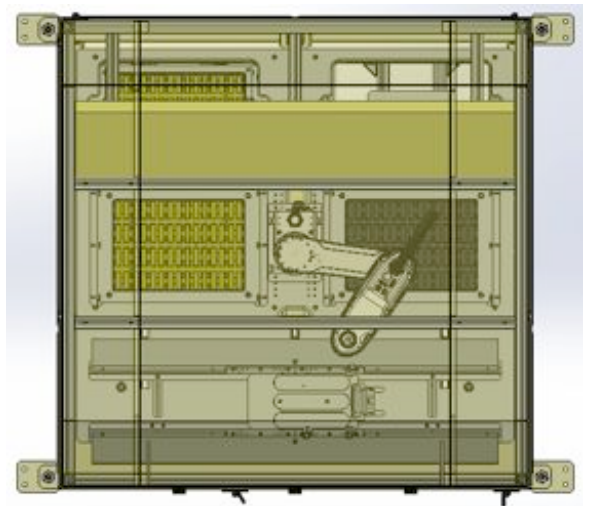
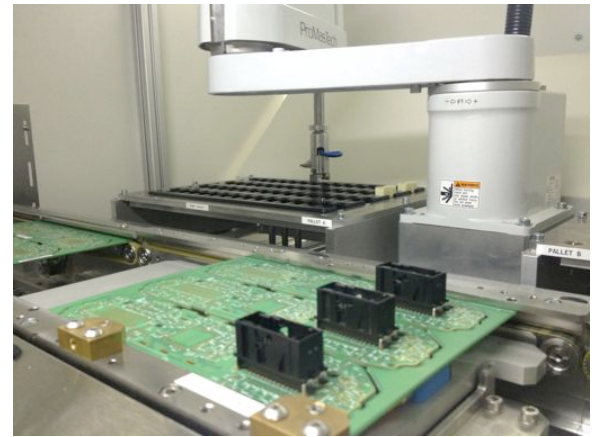
Edifício Vieira Alves Business Center
Rua Salvador nº120, 12ºAndar, Sala 1202
Tel: +55 92 3878-2653
CEP:69.057-040 Manaus - Brasil

WWW.PROMASTECH.PT

ProMasTech

Standard Specifications

- Modular Fully Automatic Placement Machine
- Modular Standard Base Platform - **PMT 1500**
- Flexible free programmable Insertion Head
- Free programmable Clinching Unit(Option)
- Standardized Feeder Interface
- Large Feeder Pool
- Automatic Tray Exchanger
- 3-Segment Edge Belt, 1- or 2-segment alternatively
- SMEMA or WMW upstream/downstream communication
- work segment; panel stop and mechanical centering unit
- Automatic width and rear tooling pin adjustment
- Transfer speed with soft stop/start (option)
- Panel Size
- 3-segment (min/max) - W=50/350mm, L=50/300mm
- 1-segment (min/max) - W=50/350mm, L=50/500mm
- Camera Aid Teach System
- Active Vision System(Option)
- Graphical User Interface
- Windows 7
- Interior Light
- High Speed Upper Gantry
- Servo X, Y, Z, Theta
- Velocity: up to 2 m/s
- Repeatability
- +/- 0.03 mm @ cmk >1,33
- Optimized steel frame structure
- Air Pressure: 8 Bar
- Power :230Vac 50Hz
- Machine weight: 950Kg
- Machine Dimension (LxWxH)
- 1500X1800X1500



ProMasTech Lda (Portugal)

Manutenção, Automação e Tecnologia Industrial
Rua dos Tractores N°506, Edifício C & S
Telf. +351 382 866/67
2870-607 Alto Estanqueiro - Portugal

ProMasTech (Brasil)

Edifício Vieira Alves Business Center
Rua Salvador nº120, 12ºAndar, Sala 1202
Tel: +55 92 3878-2653
CEP:69.057-040 Manaus - Brasil

WWW.PROMASTECH.PT